



AVC 025 SA, angle valve, manually actuated

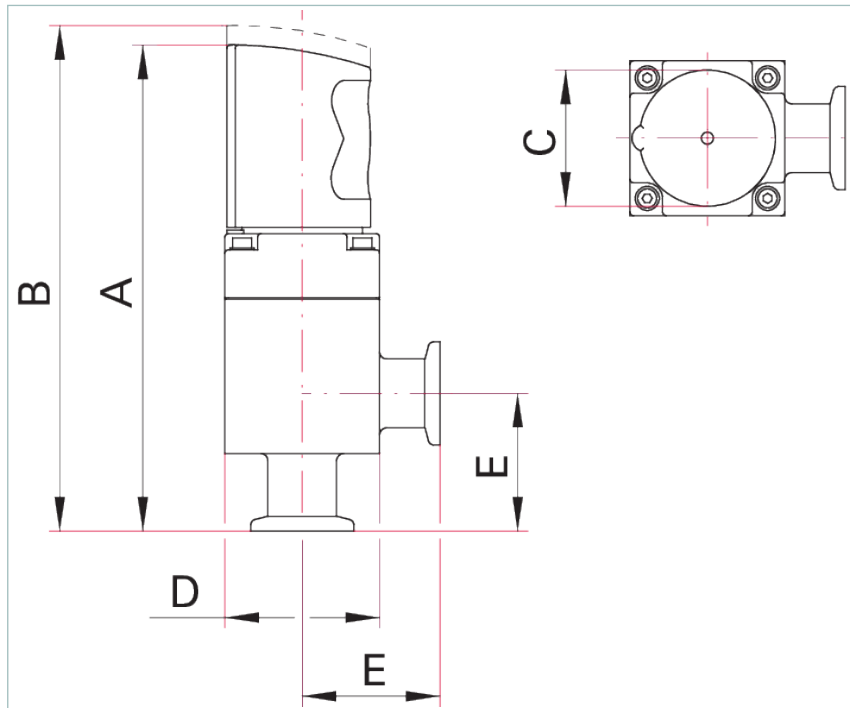


Similar Image

AVC 025 SA, angle valve, manually actuated

- Quick opening by partly turning the rotary knob
- Bellows-sealed
- With visual indication of open and closed positions
- Service life: 10000 operating cycles
- The valve must always be fully opened/closed (locked)

Dimensions



A	145.3 mm
B	155.7 mm
C	39.6 mm
D	54 mm
E	50 mm

Technical Data	AVC 025 SA, angle valve, manually actuated
Actuator	Quick opening & closing
Bakeout temperature: actuator	50 °C 122 °F 323 K
Bakeout temperature: housing	80 °C 176 °F 353 K
Conductance value with molecular flow	14 l/s
Differential pressure in closing direction	4,000 hPa 3,000 Torr 4,000 mbar
Differential pressure in opening direction	2,000 hPa 1,500 Torr 2,000 mbar
Feedthrough	Bellows Stainless steel
Housing	Aluminum
Nominal diameter	DN 25 ISO-KF
Operating pressure min.	$1 \cdot 10^{-8}$ hPa $7.5 \cdot 10^{-9}$ Torr $1 \cdot 10^{-8}$ mbar
Pressure max. (absolute)	2,000 hPa 1,500 Torr 2,000 mbar
Seal	FKM
Service life	10000 cycles
Tightness	$1 \cdot 10^{-10}$ Pa m ³ /s $7.5 \cdot 10^{-10}$ Torr l/s $1 \cdot 10^{-9}$ mbar l/s
Type	Angle valve
Weight	0.42 kg 0.93 lb

Order number	
AVC 025 SA	PF A41 003

VACUUM SOLUTIONS FROM A SINGLE SOURCE

Pfeiffer Vacuum stands for innovative and custom vacuum solutions worldwide, technological perfection, competent advice and reliable service.

COMPLETE RANGE OF PRODUCTS

From a single component to complex systems:

We are the only supplier of vacuum technology that provides a complete product portfolio.

COMPETENCE IN THEORY AND PRACTICE

Benefit from our know-how and our portfolio of training opportunities!

We support you with your plant layout and provide first-class on-site service worldwide.

Are you looking for a
perfect vacuum solution?
Please contact us:

Pfeiffer Vacuum GmbH
Headquarters · Germany
T +49 6441 802-0
info@pfeiffer-vacuum.de

www.pfeiffer-vacuum.com

All data subject to change without prior notice.

PFEIFFER  **VACUUM**